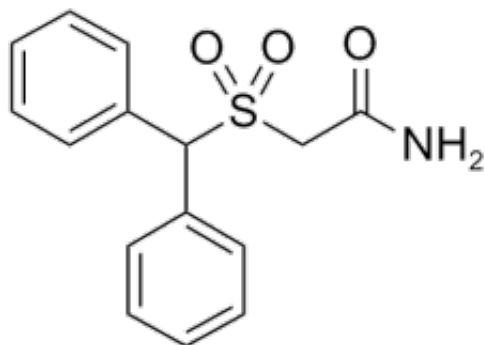


# Modafinil Sulfone

**Product Code:** M-2833  
**Weight:** 25.00mg



## Short Description

High purity Modafinil Sulfone includes a comprehensive Certificate of Analysis and all supporting analytical data

## Description

This compound comes with a comprehensive Certificate of Analysis.

Availability: In-Stock

Controlled Substance: No

25mg; 50 mg;

CAS 118779-53-6

NC(=O)CS(=O)(C1=CC=CC=C1)C2=CC=CC=C2