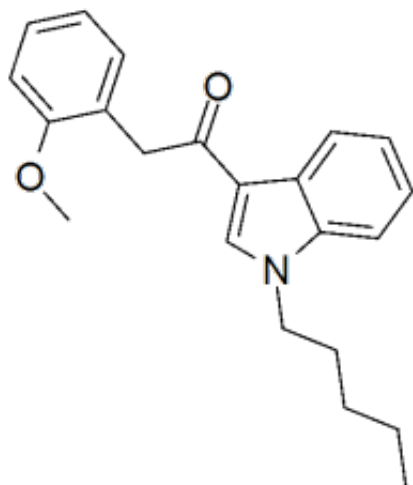


## JWH-250



**Product Code:** J-7295  
**Weight:** 10.00mg

### Short Description

High purity JWH-250 (1-Pentyl-3-(2-methoxyphenylacetyl) indole) includes a comprehensive Certificate of Analysis and all supporting analytical data

### Description

This compound comes with a comprehensive Certificate of Analysis.

Availability: In-Stock

Controlled Substance: Yes, C-I, DEA# 6250

10 mg ;

CAS 864445-43-2

O=C(CC1=CC=CC=C1OC)C2=CN(CCCCC)C3=CC=CC=C32