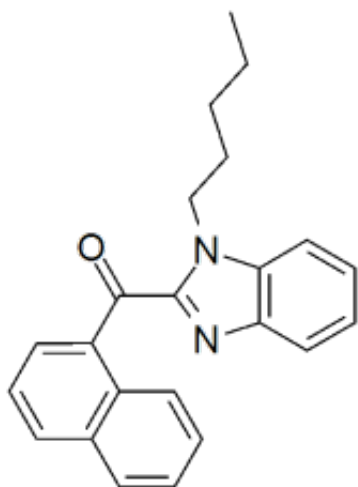


BIM-018 (JWH 018 benzimidazole analog) 1mg/ml



Product Code: SL-N-04398

Weight: 1.00mg

Short Description

High purity synthesized BIM-018 (Naphthalen-1-yl(1-(pentyl-1H-benzo[d]imidazol-2-yl)methanone, JWH 018 benzimidazole analog) 1ml of 1mg/ml ampoule solution includes a comprehensive Certificate of Analysis and all supporting analytical data

Description

This reference standard solution comes with a comprehensive Certificate of Analysis.

Availability: In-stock

Controlled Substance: No, for research and diagnostic use only. Analog of a scheduled compound

CAS: 2316839-70-8

1ml of 1 mg/ml ;